

Final Font Solutions ...

... more than just fonts for musicians

You are working with music notation software and are looking for specific symbols that you don't find in your collection of fonts? Or you have decided to add certain symbols/characters to your printed score by hand, because the solutions offered are much too time-consuming?

For these problems we have developed font solutions whose features are the following:

- Very simple key layout enables **extremely quick entries**
- **Professional design**
- **Proved** in and developed for various publications of some of the **most distinguished European publishers** (Breitkopf & Härtel, Heinrichshofen ...)
- Built-in alternatives allow **maximum flexibility**, so that various options are available concerning design and/or positioning according to your (publisher's) taste.

We currently offer solutions for:

- **Figured Bass** (standard and struck-through numbers, accidentals, brackets ...)
- **GuitarTools** (guitar fretboard pictures of your choice and more)
- **SmartTools** (ornaments, glisses, quartertone-accidentals, accidentals with brackets of different shape [standard, non-symmetric, square], pianopedal-graph and much more ...)
- **Lyrics** (improvements for Finale®-users)
- **TextTools** [only Macintosh®; available as TrueType, Type1 and Type3-font]
all features of FinalLyrics, plus **mixed entry** of text with dynamics, accidentals, note values incl. beams, tuplets, octave indicators; if used as Type3-font optional **a unique new feature: the background, e.g. barlines, can be hidden**

How to order

If you want to order the full version, you may send us cash or a check! You may also directly pass the money from bank to bank. - Sorry, no VISA .

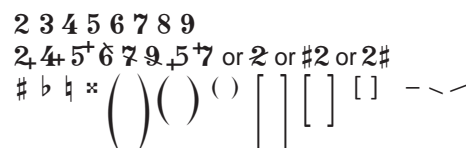
We check the account every day, so you will get the font as soon as the money arrives at the bank.

The banking address is:
Bank 24, Bonn (Germany)
Account 178 696 110
BLZ 380 707 24

The address is:
Prof. Ansgar Krause
Erftweg 29
47807 Krefeld, Germany
eMail: ansgarkrause@arcor.de

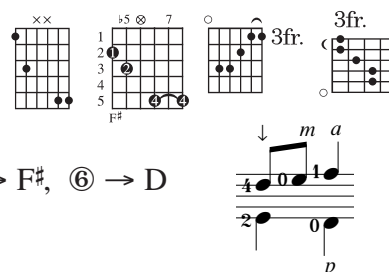
FinalFiguredBass (30 \$)

- Numbers from 2-9; almost all symbols available in 4 baseline-distances
- 2, 4, 5, 6, 7, 9 as struck-through characters, accidentals, also superscript
- Brackets and lines of different shape and direction
- Individual control of horizontal distances, professional design



FinalGuitarTools (40 \$)

- Enter as many thick dots in one chord as you like, with or without **fingering**
- One additional fret in the fretboard picture, if needed
- Specify the numbers of the fret, barree's, guitar voicings, note names
- Combine numbers with a circle around, accidentals and a separate arrow in a mixed environment together with standard characters
- Position classical guitar fingerings automatically

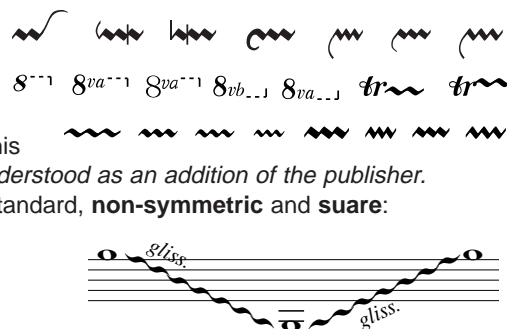


FinalSmartTools (30 \$)

This comprehensive font will mainly give you improvements the way Finale® connects characters with it's own graphic or where several characters have to be combined to look like one shape/character. You may even choose among several design-alternatives.

- All **ornaments of the baroque era** are available as complete symbols or **construction set**. They can be built depending on your taste.
- Within the SMART SHAPES tool you will be able to choose among several
 - design-alternatives** (only some can be shown here) and
 - positionings** relative to the 8^{va} - and tr -character.
- Furthermore, the bracket that usually is drawn by Finale® when an 8^{va} is continued on a new staff system, will not be shown! We have disabled this feature, because many publishers don't like it. *The bracket could be misunderstood as an addition of the publisher.*
- All accidentals and cancelling double accidentals ($\sharp\sharp$ and $\flat\flat$), brackets in standard, **non-symmetric** and **suare**: ($\#$) or ($\#$) or [$\#$], furthermore **quarternote-accidentals** \sharp etc.
- several wavy lines, **stretchable glisses at different angles**
- stretchable **graphic for piano pedal and harp, and much more...**

Some examples and alternatives:



FinalLyrics (at no cost, if you buy one of the other fonts)

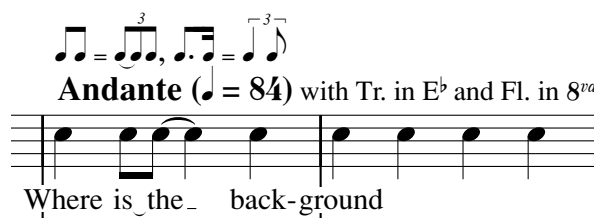
Textfont based on TIMES to be used as lyrics with additional options and characters.

- Choose yourself, if the dash (hyphen) should be shown behind, below or even before the first note of a continued staff (and continued syllable).
- Additional characters (incl. rests and a syllable-to-syllable-arch) $\sim \text{ } \text{ } \text{ } \rightarrow$
- If you are a Windows-user, you never again need to type **ALT-0160** to get the nonbreaking space, use < instead.
- Available in regular and italic



FinalTextTools (20 \$) Macintosh® only

- All features of **FinalLyrics**, plus
- Mixed entry** of regular characters with dynamics (also in brackets), note values including beams, tuplets, accidentals and $8^{va}/15^{ma}$ -characters.
- When using the type3-version and printing to a postscript printer, the **background** (e.g. barlines) **can be hidden!**
- Available in regular, italic, bold and music; music will give the same characters as bold, only the numbers will have the design of popular music fonts.



All fonts are now 100% compatible with MacOS, WindowsNT, and Windows95 and later.